



58-25 Queens Blvd.
Woodside, NY 11377
T: (718) 204-7077; (800) 627-1244
F: (718) 204-4726
E: info@classicescapes.com
W: www.classicescapes.com

Nature & Cultural Journeys
for the Discerning Traveler

TED SCHIFFMAN/ANIMAL IMAGES

CORDIALLY INVITE YOU ON A
PHOTOGRAPHIC SAFARI TO
KENYA

AUGUST 3 TO 14, 2012



YOUR ESCORT – TED SCHIFFMAN, PHOTOGRAPHER

The escort for your safari is renowned photographer Ted Schiffman making his sixth safari to Kenya. He will provide daily instruction and you will have an opportunity to photograph with him.

Ted developed an interest and direction in photography as a natural result of many years of training as an artist. In addition to having a keen eye for balance and composition, he is a skilled darkroom craftsman. Ted's collection of prints illustrates his artistic and photographic abilities, as well as his love and respect for the beauty of nature. Unlike most nature photographers who deal with sweeping landscapes, Ted focuses on intimate, close images that feast the eye and excite the imagination. His animal portraits seem to capture the soul of his wildlife subjects.

Ted has published images and participated in research on many endangered species. His photographs have been published worldwide by the National Geographic Society, the U.S. Department of Interior, the World Wildlife Fund, the American Museum of Natural History, among many others. In addition to exhibiting his work at numerous galleries and universities, Ted is the author of *A guide to Backpacking Photography*.

Ted's unique perspective and photographer's eye are sure to greatly enhance your safari experience with your own images.

YOUR PROFESSIONAL NATURALIST IN KENYA – FRANCIS KITAYI



One of the best-known ornithologist naturalist guides in East Africa, Francis has shared his vast knowledge and passion of the region's greatest assets with Audubon, Zoological and various other groups since 1980. Francis hails from the western province in Kakamega in Kenya and is of the Luhya tribe. He has become known as an extremely knowledgeable guide and a favorite of many of our clients, with a wealth of information on all aspects of Kenya, its people, geography, flora and fauna.



YOUR ITINERARY

DAY 1 ~ FRIDAY ~ AUGUST 3

WASHINGTON D.C./EN ROUTE

Your journey begins as you board your Ethiopian Airlines flight from Washington D.C., en route to Addis Ababa. (Meals Aloft)

DAY 2 ~ SATURDAY ~ AUGUST 4

ADDIS ABABA/NAIROBI

Arrive in Addis Ababa this morning, where you connect with your flight to Nairobi, the safari capital of East Africa, where you will be welcomed by your Classic Escapes expert driver/guides and escorted to your luxurious hotel.

Amidst the bustle of one of Africa's most dynamic cities there is a sanctuary offering peaceful respite...the Nairobi Serena Hotel. Standing among verdant gardens, it is considered one of Nairobi's finest hotels. With consummate standards of modern hospitality, it is the flagship of Serena Hotels and a member of Leading Hotels of the World. Enjoy the swimming pool, the restaurant, the excellent gift shop, and the comfort of your delightful room.

Overnight at the NAIROBI SERENA HOTEL. (Meals Aloft) www.serenahotels.com



DAY 3 ~ SUNDAY ~ AUGUST 5

NAIROBI

An interesting day is in store for you. After a briefing about the wonderful events ahead, get set for an exciting adventure as you visit Daphne Sheldrick's Elephant Orphanage at the edge of Nairobi National Park, which is a nursery and rehab center for infant elephants that have lost their families, as well as rhino and occasionally zebras and other wildlife.

Daphne was the first person to successfully master the art and raise orphan infant elephants. The wife of the famous naturalist David Sheldrick, Daphne has dedicated her life to conservation. David was founder Warden of Kenya's giant Tsavo East National Park, in which he served from 1948 until his death in 1976. Daphne has continued her involvement and has had real impact on the lives of elephants and rhinos, which would have normally died due to human poaching and surrounding population conflict. You'll enjoy a visit with the elephants as they're brought by their keepers to the waterhole and salt lick to be fed and socialize - see how they roll in the mud and play fight, and their affectionate interaction with their keepers. Daphne, or a member of her staff, will be on hand to discuss their habits, as well as impart interesting facts about their upkeep. These infants are eventually released into the wild at Tsavo East National Park and end up in the care of other orphans who have been successfully reintroduced to the wild.



Enjoy lunch at Karen Blixen's Garden Restaurant before visiting the Karen Blixen House, the former house of the Danish Baroness, Karen Blixen (1885-1962) author of the book *Out of Africa*. Karen lived in this green residential area from 1914 to 1931 when she left permanently for Denmark. The house was built in 1910 and when Ms. Blixen bought the property, it had 6,000 acres of land but only 600 acres were developed for growing coffee; the rest was retained under natural forest. The house was bought by the Danish Government, which offered it back to Kenya in 1963. In 1986, the house, formerly used as a school, was transformed to a National Museum. Much of the original furniture is on display in the house and most objects were either used by Karen herself or for the shooting of the film or donated to the museum.



Continue to the AFEW Nature Center near Giraffe Manor where you may hand-feed the Rothschild giraffe that live here. The giraffe were brought here by Jock and Betty Leslie-Melville, who founded AFEW (African Fund for Endangered Wildlife) and built the Nature Center to help educate young African children about wildlife conservation. The Rothschild giraffe are the tallest species and may reach 18 feet in height, but you can see eye to eye with them on the elevated walkway at the center.

Tonight's dinner will be at the Carnivore restaurant. Overnight at the NAIROBI SERENA HOTEL. (B,L,D)

DAYS 4/5 ~ MONDAY/TUESDAY ~ AUGUST 6/7
TSAVO WEST NATIONAL PARK

Your drive takes you to Tsavo West National Park (*an optional flight is available at a cost of \$TBA per person.*) At just over 8,000 square miles, Tsavo is the largest national park in Kenya and one of the largest in the world. Because of its size, the park was split into two, Tsavo West and Tsavo East, for easy administration. Located midway between Nairobi and the coast, the area boasts volcanic hills, four rivers, more than 60 major mammal species and 1,000 plant species. The northern part of Tsavo West is the most developed and has spectacular scenery with a rolling volcanic landscape carpeted in long grass and dense bush. Although the tall vegetation makes game spotting trickier than in some of the other parks, Tsavo West's bio-diversity is amazing. The landscape is a mixture of grassland and forest shrub vegetation. Thus, driving and exploring the vegetation almost assures you close encounters with the following animals: lions, leopard, cheetah, zebras, giraffes, antelopes, kongoni, waterbuck, klipspringer, impala, gazelles, buffalos, and elephants. Apart from Tsavo's elephant population, there are many lion - some undoubtedly the descendants of the infamous and feared "Man-eaters of Tsavo" popularized in the film *Ghost in the Darkness*. In addition to lion the resident carnivores in Tsavo include serval, hyena, leopard, cheetah, and caracal. The landscape is dominated, especially off the hills, by the giant baobab, a tree that is reputed to live 1,000 years.



Tsavo West is famous for the Mzima Springs. This star attraction is a pool of natural spring water with underwater viewing hides for observing hippos where a gushing supply of fresh, crystal clear water has created an oasis for wildlife.



A specially constructed underwater observatory provides visitors with a unique view into the underwater world of Mzima. The water catchment is divided into two pools; here you can view hippos and crocodiles. The upper pool is occupied by the hippos and lower pool by the crocodiles. While here, you will have the chance to learn about the Maasai way of life and how they have co-existed through the millennia with the wildlife, as you visit a Maasai village, a Manyata.

The first lodge ever to be built in a Kenyan National Park, Kilaguni Serena Safari Lodge is superbly situated in the lee of Mount Kilimanjaro, encircled by volcanic splendor, adjacent to a teeming waterhole and daily visited by vast herds of elephant, buffalo and plains animals. Inspirationally positioned so that not only all the rooms but also the open-air restaurant, timbered

viewing decks and rock-built bar enjoy uninterrupted views of the legendary snows of Kilimanjaro, the lodge also stands central to miles of lion-stalked grasslands, elephant-studded plains and wildlife-teeming bush and is ideally placed for visits to all the park's prime attractions. Faced in volcanic stone and utilizing the natural rocky outcrops of a valley known as 'the place of the young rhino', from which it takes its name, the lodge has been designed to blend chameleon-like into the savannah landscape. Cool, tranquil and hushed for optimum wildlife-viewing, the open-air dining area, timbered decks and rock-hewn bar blend the traditional "khaki-and-canvas" look with bright-painted banners, sepia-hued paintings and evocative olive-wood carvings of elephant herds and tail-erect warthogs. The elegantly renovated rooms draw on a sun-gold, sky-blue and bush-green savannah color palette and have been so styled to provide world-class luxury and a quintessential African aura while featuring private verandahs with views of eternity.

Overnights at KILAGUNI SERENA SAFARI LODGE. (B,L,D Daily)

DAYS 6/7 ~WEDNESDAY/THURSDAY~ AUGUST 8/9 AMBOSELI NATIONAL PARK/MOUNT KILIMANJARO

Today's drive takes you to Amboseli National Park located at the foot of Africa's highest mountain, Mount Kilimanjaro, which Ted climbed in 1972. The snow-capped peak of Mount Kilimanjaro rises above a saucer of clouds and dominates every aspect of Amboseli.

This park covers only 150 square miles but despite its small size and its fragile ecosystem, it supports a wide range of mammals (well over 50 of the larger species) and birds (over 400 species). Years ago this was the locale around which such famous writers as Ernest Hemingway and Robert Ruark spun their stories of big-game hunting in the wilds of Africa. This too, is part of Maasailand, and it's not unusual to see the proud Maasai warrior or small children tending their cattle as you traverse their territory. In this land, animal and man have learned to coexist and thrive together, despite the harsh conditions. This is also the park that has been made famous by Cynthia Moss, the noted



American naturalist and author who has one of the longest-running studies on elephants. You might even see some of the elephants that Cynthia has immortalized in her many books and award-winning film *Echo of the Elephants*.

In the shadow of Mount Kilimanjaro, beside a copse of giant acacia trees and a gently flowing natural spring, stands Amboseli Serena Safari Lodge. With Kilimanjaro's 19,340 foot snow-capped summit presiding over the landscape, the setting is unrivalled. All around the lodge roams the wildlife that has made East Africa legendary – lion, buffalo, cheetah,



giraffe, baboon, gazelle, and wildebeest. Influenced by native Maasai architecture, the lodge is in perfect harmony with its environment. Beautifully landscaped gardens, unique guest services and exceptional amenities enhance the distinctive ambience. The uniquely constructed Ivory Class guest rooms – 96 in total – with en-suite bathrooms, individually appointed with authentic Africana and murals painted by a renowned local artist, convey a distinctive Maasai Manyatta mood. Grouped in the manner of a Maasai village, each room enjoys a view of either majestic Mount Kilimanjaro or the expansive Amboseli plains, which are home to herds of elephant that feed on the large, feathery acacia trees. Overlooking the

saltlick and floodlit waterhole, the open-air dining room serves guests sumptuous international menus, buffets and barbecues alongside authentic African dishes. A full service bar and refreshing outdoor pool are some of the other luxuries one is expected to find at this lodge.

Overnights at the AMBOSELI SERENA SAFARI LODGE. (B, L, D Daily) www.serenahotels.com/kenya/amboseli/home.asp

DAYS 8/9/10 ~ FRIDAY/SATURDAY/SUNDAY~ AUGUST 10/11/12

MAASAI MARA /NAIROBI/ NORTHERN SERENGETI

Drive back to Nairobi have lunch and then board your flight to Maasai Mara, Kenya's most famous wildlife reserve and the setting for much of the film *Out of Africa*. It is classic savannah grasslands, where animals are plentiful and the vistas spectacular. Here Maasai tend their cattle in concert with free roaming wildlife – all sharing the same land with minimal conflicts. You will have three days of wildlife-viewing opportunities in the Maasai Mara Reserve, also known as the "Jewel of Africa," inhabited by many of Africa's most popular wild animals, including lion, cheetah, elephant, leopard, black rhino and hippo. There are over 500 resident species of birds in the park including ostrich, larks and sunbirds as well as the lovely Lilac-breasted Roller.



The area is famous for rolling grassland and for the Mara River, which runs through the reserve from north to south. The reserve covers an area of 700 square miles and forms part of the Serengeti ecosystem, hosting the world famous spectacle of the annual migration of up to two million wildebeest, thousands of zebra and an escort of carnivores as they follow the rains and succulent new grass. A costly trek as many of the lame, laggard and sick will fall prey to ravenous packs of predators and many more will die crossing the swirling flood waters of the Mara River. You will be in the Mara during prime time for the migration and you are sure to have a front-row seat as it unfolds right in front of your eyes!



Optional activities (*at additional cost*) abound while you are in the Maasai Mara. You can try a balloon safari for an exhilarating experience over the savannah as the early sun rises and the animals are more active. Or, take a short flight to Lake Victoria, where either at Mfangano or Rusinga Islands you can see the life of the natives who rely on fishing and what the lake has to offer – in fact, you can try your hand at fishing and possibly catch up to 100-pound Nile perch. You may also want to visit a paleoanthropological site in the area. Duties permitting, a Mara warden will discuss current conservation issues faced in the Mara. If you wish, for a nominal fee, you can also visit a Maasai Village.

The Mara Serena Safari Lodge is an interpretation of a traditional Maasai Manyatta village of domed huts. Accommodation is offered in 73 guestrooms, all of which have been styled to mirror the circular motif of a traditional Maasai Manyatta village of domed huts. The wide-spaced and secluded rooms have been individually styled in exuberant bush colors and feature large spacious en-suite bathrooms. It is set on the saddle of a hill where it overlooks the 695 square miles of rolling plains, woodlands and rivers that make up the Maasai Mara Triangle – one of the world's richest wildlife sanctuaries. No other lodge has such a spectacular view of the surrounding landscape or the wildlife and birdlife that inhabit it. It is on this very terrain stretching endlessly before the lodge where the annual migration takes place, where millions of wildebeest, zebra and gazelle traverse the landscape to feed on the rich new grass and give birth to their young.

Overnights at the MARA SERENA SAFARI LODGE. (B,L,D Daily) <http://www.serenahotels.com/kenya/mara/home.asp>

DAY 11 ~ MONDAY ~ AUGUST 13

MAASAI MARA / NAIROBI

A last chance to photograph that spectacular sunrise before flying back to Nairobi. Proceed to the airport for your afternoon flight to Addis Ababa, connecting to your flight home. As your journey ends, say a fond farewell (**Kwaheri**) to your driver/guides and naturalist and promise to come back in the not too distant future. (B Meals Aloft)

DAY 12 ~ TUESDAY ~ AUGUST 14

WASHINGTON D.C.

This morning your jet lands in Washington D.C., bringing with you the memories of all the wonderful sights of East Africa. (Meals Aloft)



OPTIONAL POST-EXTENSION TO LAKE NAKURU NATIONAL PARK & SAMBURU RESERVE

DAY 11~ MONDAY ~ AUGUST 13
MAASAI MARA/LAKE NAIVASHA



A last chance to photograph that spectacular sunrise before you drive to the Great Rift Valley, which is a huge geological fault-line that stretches round one-sixth of the Earth's circumference and is visible from far out in space. At 2,000 feet deep and 30 miles wide, it runs as far as the eye can see. Its walls are sheer and high and along its length there are many volcanoes, most now dormant. With bubbling springs and geysers, the landscape is spectacular.

Your first stop is Lake Naivasha where you will be treated to a boat ride, where hippos and water birds abound, en route to Crescent Island, which you can explore on foot. No predators are found on this island, so walking among the free-roaming

antelope is sure to be a fun experience. This island, shaped like a quarter moon, is a sanctuary for herds of antelope and many species of birds. Over 350 bird species have been recorded, with Thomson's gazelle, waterbuck, monkeys and other wildlife to keep them company.

Your home for the night borrows its name from the Masai word Enashipai - meaning a state of happiness. The Enashipai Resort and Spa is located within the splendor of the Rift Valley and by the shores of Lake Naivasha, the second largest fresh water lake in Kenya. It has 70 comfortable and spacious rooms all of them equipped with modern amenities and surrounded by lush tropical gardens. The resort offers a heated swimming pool with sundeck and a fitness center with resident instructor. Dine while savoring the finest cuisine in the resort's Main restaurant. The restaurant's professional chef uses only the freshest ingredients from nearby farms to create a truly sensational menu. Game drives are only one aspect of the Enashipai experience. Other optional activities at the resort include mountain climbing, hiking, rock climbing, biking, and bird watching.



Overnight at the ENASHIPAI RESORT. (B, L, D) www.enashipai.com

DAY 12~ TUESDAY ~ AUGUST 14

LAKE NAKURU



Head to Lake Nakuru National Park, a shallow alkaline lake that is world-renowned for its huge concentration of flamingos; at times, hundreds of thousands of these birds give the lake a pink shimmering glow. The park boasts a huge variety of animals, including leopard which is often found snoozing on the branches of the magnificent yellow-barked acacias, lion, buffalo, hippo, waterbuck, warthog, baboon, the endangered Rothschild's giraffe only found in this park in Kenya, white rhino and the rare black rhino which is protected and guarded here. For the bird-watching enthusiast there are 450 species found in the park vicinity, with a vast concentration of water birds including Marabou Stork, pelican, and of course the world-famous flocks of flamingo.

You will have lunch at the Sarova Lion Hill lodge, built in a natural dais, overlooking Lake Nakuru, one of the world's greatest ornithological spectacles.

Overnight at the ENASHIPAI RESORT. (B,L,D)

DAY 13~ WEDNESDAY~ AUGUST 15

SWEETWATERS TENTED CAMP

In the heart of a privately-owned 24,000 acre reserve is where your drive ends and another adventure begins at your luxurious tented camp with magnificent views of Mt. Kenya. One of only four private wildlife reserves in Kenya, your under canvas experience includes a day wildlife drives in search of the 'Big Five'. Watch a parade of elephant, giraffe, zebra and impala come to drink at the camp's floodlit waterhole and saltlick. Optional activities abound, you may choose to go on a night drive in search of nocturnal species, go on a nature walk or join a rhino patrol with experienced armed rangers to find and monitor black rhino.

During your stay here, you will also visit the 200-acre Chimpanzee sanctuary that has been set up here. Although chimps are not indigenous to Kenya, the aim of the project, initiated by Lonrho East Africa, Kenya Wildlife Services and the Jane Goodall Institute, was to set up a colony where chimps could be introduced, rehabilitated and taught to fend for themselves in an area similar to their natural living conditions. Priority is given to orphaned and abused chimps. The Sanctuary currently has 27 chimps, including two babies born in the Sanctuary. There is also a new Visitor's Information Center at Morani's Boma. While here, you will be treated to a guided walking safari. At an optional cost, you can enjoy camel safaris, and horse-back riding.





You will also visit a local school in the area and get an opportunity to meet the school children. Bring books, pens, schools supplies, and a few songs from your homeland. The children will impress you with their friendliness, songs, and genuine pleasure at having you there.

Accommodation is provided in luxuriously appointed tents set under thatched roofs, with en-suite facilities and private verandahs. All tents face the waterhole, and often the best time to be had is just seating on your private porch watching the procession of animals that are attracted to the waterhole and observing their behavior.

Overnight at SWEETWATERS TENTED CAMP. (B,L,D)

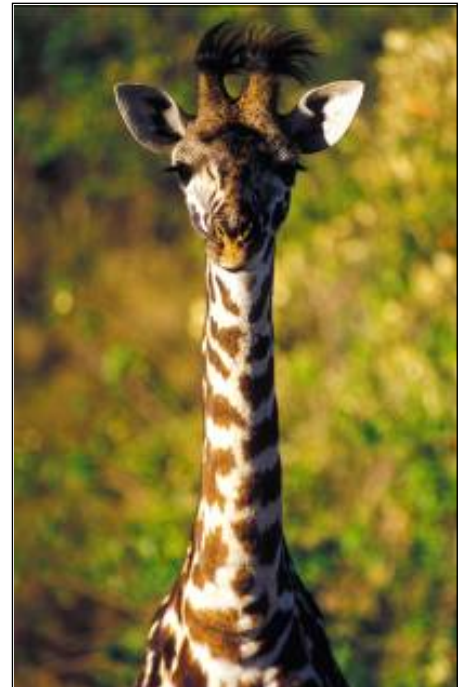
DAYS 14/15~ THURSDAY/FRIDAY~ AUGUST 16/17

SAMBURU RESERVE

Drive on rugged roads, through rich farm land, en route to Samburu Reserve, which lies 200 miles north of Nairobi on the hot and arid fringes of the vast northern region of Kenya. The reserve is within the lands of the colorful Samburu people, close relatives of the Maasai, and home to a number of wildlife species rarely found elsewhere in Kenya: Grevy's zebra, reticulated giraffe, and Beisa oryx, all found only north of the equator. The graceful gerenuk, an antelope with its characteristic long neck, spends much of its time in a bipedal stance seeking relaxation in the sparse scrub that grows in this harsh terrain. This dramatic landscape is blanketed by the hot equatorial sun for most of the year. Relief comes from the cool waters of the Uaso Nyiro ("Brown") River, which rises to the west on the foothills of the Aberdares and which vanishes beyond Samburu in the soggy expanse known as the Lorian swamp. The scenery in Samburu is magnificent and the birdlife awesome.

Situated on the banks of the Uaso Nyiro River, the Samburu Lodge looks out over riverbanks where herds of elephant, buffalo and zebra come daily to drink. The lodge is set in a rugged landscape with a stunning backdrop of jagged mountains and its own indigenous wildlife unique to the region. The unique guest rooms are spread up and down the river in various sizes of cottages and bandas, with a mixture of decor styles. All rooms have en-suite bathrooms, and some have verandas overlooking the river.

Overnights at the SAMBURU LODGE. (B,L,D Daily)



DAY 16 ~ SATURDAY ~ AUGUST 18

SAMBURU RESERVE / NAIROBI

Drive back to Nairobi (*an optional flight between the Samburu and Nairobi is available at a cost of \$300 per person*) and proceed to the airport for your afternoon flight to Addis Ababa, connecting to your flight home. As your journey ends, say a fond farewell (**Kwaheri**) to your driver/guides and naturalist and promise to come back in the not too distant future. (B Meals Aloft)

DAY 17 ~ SUNDAY ~ AUGUST 19

WASHINGTON D.C

This morning your jet lands in Washington, DC, where you connect with your flight home bringing with you the memories of all the wonderful sights of East Africa. (Meals Aloft)

OPTIONAL EXCURSIONS IN THE MAASAI MARA

BALLOON SAFARI



Experience an exhilarating balloon safari for the most amazing way of viewing wildlife. It begins in the early morning and you have an hour of uninterrupted views of wildlife from the air – the best way to see the migration and the incessant movement of animals in the Mara. Upon landing, enjoy a champagne brunch, set especially for you in the middle of the plains. Zebra and wildebeest may be your dining guests, and Africa's colorful birds may be vying for a crumb of your bread. At present, the cost is \$450 per adult (including children 12 and over) and \$275 per child aged 8-11 years.

LAKE VICTORIA

Lake Victoria is the source of the Nile River and the second largest freshwater lake in the world. Your early morning flight takes you over the sweeping landscapes of the Mara, to Rusinga or Mfangano Islands, where you'll enjoy breakfast. Native wildlife consists of monitor lizards, over 100 species of exotic birds, and spotted necked otters that may be playing along the water's edge. Picturesque fishing dhows can be viewed on the lake, and you can visit some unspoiled traditional fishing villages. One of the favorite activities is trying your luck at fishing for giant Nile Perch, sometimes weighing up to 100 pounds. After lunch, fly back to your accommodation in the Mara in time for your afternoon wildlife run. At present, the cost is \$496 per adult and \$305 per child.



Reservations for either of these two excursions are necessary before departure from the USA, if you wish to be guaranteed a seat. Full payment must be forwarded to Classic Escapes, 58-25 Queens Blvd., Woodside, NY 11377, to be received at least three weeks prior to departure. If your trip does not materialize due to weather or other reasons, your payment will be refunded upon returning to the U.S.A. However, if you should cancel for any reason, payment is non-refundable.

INCLUSIONS

- Flight between Nairobi/Maasai Mara and Maasai Mara/Nairobi on the main program.
- Superior accommodations throughout as indicated or similar.
- American breakfast, all meals while on safari in Kenya.
- Lunch at Blixen's Garden Restaurant and welcome dinner at the Carnivore Restaurant.
- All wildlife viewing by minibus, driven by a naturalist driver/guide. A window seat is guaranteed.
- Complimentary bottled water in vehicles and at meals.
- Visit to Daphne Sheldrick's Elephant Orphanage, Giraffe Nature Center and Karen Blixen's home while in Nairobi.
- Ted Schiffman will accompany the group with a minimum of 10 travelers on both main and extension programs.
- Professional Naturalist Francis Kitayi with a minimum of 10 passengers.
- All applicable hotel/lodge taxes, tips at meals and gratuities for baggage handling.
- All National park entry fees.
- Complimentary baggage tags and passport wallet.

EXCLUSIONS

- Round trip air transportation between Washington D.C. and Nairobi (quoted separately).
- Flight between Nairobi and Tsavo (Kilaguni). (Optional)
- Flight between Samburu and Nairobi on the extension. (Optional)
- U.S. and foreign airport taxes.
- Passport and visa fees and service charges for obtaining visas.
- Excess baggage charges levied by airlines.
- Meals and beverages, other than specified.
- Gratuities to driver/guides and other conveyance attendants.
- Laundry and other items of a personal nature.
- Personal and baggage insurance.
- Cost for anything not specifically mentioned in the listing above.
- Optional insurance coverage is available for Baggage, Accident and Trip Cancellation/Interruption at special low cost group rates.

Please Note That The Itinerary Sequence Is Correct At The Time Of Writing,
And Is Subject To Change.

THINGS YOU NEED TO KNOW ABOUT KENYA

Participants:

- Must be able to climb in and out of, as well as move around in confined quarters within safari 4 x 4 vehicles, minibuses, and small aircrafts unassisted. People need to be willing to rotate seats.
- Must be able to tolerate riding on uncomfortably uneven, bumpy roads (some with many potholes) for long periods of time (6-9 hours maximum), as well as some off-road experiences when opportunities allow.
- Must be able to stand and/or walk moderate distances when visiting villages, towns, or other sites. This walking will be on uneven ground or uphill, often at altitudes many people are not used to.
- Should generally be in good health and prepared to travel in locations without medical facilities.

In general, this trip requires:

- Flexibility and good humor – unexpected changes and/or glitches will occur
- A spirit of adventure and curiosity
- Interest in and willingness to appreciate a destination with a modest infrastructure and a bending definition of comfort. That being said, some locations are nestled in absolute luxury where pampering is the norm.

Air Schedules

Choosing the best possible air arrangements for our travelers is always a challenge. We work with many airlines that offer the best level of service, routings and value for our programs. While there may indeed be more direct routings available with another airline, the cost of these flights may not be within the budget that allows us to give you the best value possible. If you prefer to purchase your own international air, please feel free to choose the “land only” rate for this program. **The start and end city for the land only program is Nairobi, Kenya.**

Upon registration, you must provide your full legal name as it appears on your passport. In the event an airline ticket is issued with incorrect information you have provided, you will be responsible for charges associated with reissuing the ticket.



YOUR JOURNEY AT A GLANCE

INCLUDING: NAIROBI, TSAVO WEST NATIONAL PARK, AMBOSELI NATIONAL PARK & THE MAASAI MARA RESERVE

ESCORTED BY: TED SCHIFFMAN

DATES: AUGUST 3 TO 14, 2012

COSTS:

	MAIN TOUR BASED ON 10 TRAVELERS	POST EXTENSION BASED ON 10 TRAVELERS
LAND ONLY PROGRAM	\$5,795 PER PERSON	\$2,795 PER PERSON
ESTIMATED AIRFARE, ADDITIONAL, FROM WASHINGTON D.C.**	\$1,600 PER PERSON	N/A
ESTIMATED AIR TAXES, CURRENTLY (SUBJECT TO CHANGE)	\$575 PER PERSON ADDITIONAL	N/A
SINGLE ROOM SUPPLEMENT*	\$1,195 PER PERSON ADDITIONAL	\$795 PER PERSON

**SINGLE SUPPLEMENT: RATE IS VALID FOR FIRST TWO SINGLE ROOMS BOOKED. IF MORE THAN TWO SINGLE ROOMS, ADDITIONAL SUPPLEMENT WILL APPLY. SINGLES ARE ASSIGNED ON A FIRST COME/FIRST SERVE BASIS.*

****ALL INTERNATIONAL AIRFARES ARE SUBJECT TO CHANGE AND BASED ON MINIMUM OF 10 TRAVELERS. TAXES ARE SUBJECT TO CHANGE UNTIL TICKETED. IF LESS THAN 10 TRAVELERS, THE FARE WILL INCREASE & GIVEN TO THE TRAVELERS PRIOR TO ISSUING THE TICKETS, APPROXIMATELY TWO MONTHS PRIOR TO DEPARTURE**

DEPARTURE CITY: WASHINGTON D.C.

(OTHER DEPARTURE CITIES AVAILABLE UPON REQUEST AT ADDITIONAL COST)



CONDITIONS OF TRAVEL:

HOW TO BOOK: Fill out the reservation form below and send it to Classic Escapes, 58-25 Queens Blvd., Woodside, NY 11377, together with a deposit of \$750 per person plus \$250 for the extension, as well as your insurance payment if you wish to take advantage of the pre-existing medical condition exclusion. On receipt of your signed reservation form and deposit, we will, subject to availability, reserve your place on your safari. When we send off your confirmation invoice, your booking is confirmed and accepted by us. Final payment is due not later than 75 days prior to departure (May 20, 2012). Final documents will be sent to you approximately two weeks prior to departure.

AIR TRANSPORTATION: Roundtrip economy-class jet transportation from WASHINGTON D.C. via ETHIOPIAN AIRLINES and/or other IATAN carriers. Rates based on special promotional fares and cancellation fees apply once tickets are issued. Departures from other cities in the USA are possible at additional cost. Kindly inquire at the time of reservation.

DEPARTURE TAXES: Please note the amount of departure tax reflected on the Reservation Form is subject to change, at the discretion of governments and airlines, and with no advance notice. Should this occur, you will be invoiced prior to departure for any additional taxes imposed.

AIRLINE SEATING: For **Ethiopian Airlines**, we request seats together for the group. All planes are non-smoking. We can request a seating preference on your behalf, however this is only a request and not guaranteed. Requests should be made in writing no later than 60 days prior to departure. Bulkhead and/or emergency row seats can only be requested at airport check-in on the day of departure. Boarding passes will only be issued at the airport on the day of departure. You may inquire during check-in to have a seating change made, however this change is based on availability and is at the sole discretion of airport staff.

FREQUENT FLYER MILEAGE: At time of publication, **Ethiopian Airlines** is a partner with Lufthansa German Airlines, Scandinavian SAS and ASKY. You may obtain frequent flyer mileage on any of these carriers. Present your frequent flyer card for all flight check-ins and keep the boarding passes until you receive a statement with the mileage credit. You may obtain frequent flyer mileage on any of these carriers.

BAGGAGE: International flights from the U.S. allow one piece of checked luggage, not exceeding 50 lbs. However we recommend you travel as light as you can manage. **The baggage limit on domestic flights is one piece at 33 lbs. per person (plus a carry-on bag.)** Also, the size and the structure of the bag is limited. Soft duffel bags are ideal. Large suitcases are virtually impossible to stow on smaller aircraft and vehicles and therefore should not be used. **WE HIGHLY RECOMMEND THAT YOU OBTAIN THE OPTIONAL INSURANCE POLICY.**

ACCOMMODATIONS: You will marvel at the wonderful accommodations provided throughout your tour. All rooms have private facilities, and all rates are based on double occupancy. Most rooms are twin-bedded, but king-size beds are occasionally available and should be requested in advance. Accommodations listed in this itinerary are correct at time of writing, but on rare occasions can change for similar lodging.

SINGLE SUPPLEMENT: Rate quoted is valid for first two single rooms booked. If more than two single rooms, additional supplement will apply. Singles are assigned on a first come/first serve basis. Single accommodations are not guaranteed, but will be provided at additional cost if available (see reservation form for cost.) The single room supplement pays for privacy, not better accommodations. On occasion, in smaller lodges and camps, you may be required to share with other members of your tour group if single rooms are not available upon check-in. If this is the situation, appropriate per diem refunds are made to passengers in the event they paid for a single room but had to share during any portion of their trip. For passengers who are traveling alone and wish to share a room with another tour member, we will do our best to provide a roommate. However, if this is not possible, you will be required to pay the single room supplement prior to your departure from the USA.

MEALS: No meals are provided in Ethiopia. Enjoy all meals on safari while in Kenya. American breakfast only is provided in Nairobi.

WILDLIFE VIEWING: Your tour will be conducted in minibuses throughout. All are guaranteed a window seat.

TRANSFERS: Roundtrip transfer of travelers between airports and hotels are included in the tour when arriving on group flights. If travelers make their own air arrangements, they will be subject to extra transfer fees.

TIPS AND TAXES: Gratuities for baggage handling, service charges and taxes imposed by hotels, lodges and tented camps, and entrance fees to all reserves as outlined in the itinerary are included. U.S. and foreign airport taxes are not included and will be billed prior to your departure. Tips to driver/guides are not included and are at the discretion of the tour members. A suggested tipping chart will be forwarded with the final documents.

INOCULATIONS: We would suggest you contact your personal physician or local health department for their recommendations as to inoculations. At the time of printing, no vaccinations are required for entry into Kenya. However, **it is also a sensible precaution for visitors to take one of the preventive pills that are in common use against malaria.** Water is NOT safe to drink throughout and it is always advisable to drink bottled water which will be provided for you free of charge in the vehicles.

RATES: All rates quoted are based on tariffs and value of foreign currencies in relation to the U.S. dollar in effect as of October 5, 2011, and are subject to change. Rates are based on a minimum of 10 passengers traveling together (with a maximum of 24 passengers, including Organization escort). The right is reserved to levy a surcharge if minimum is not met, but that is rarely done. We will do our utmost to keep to the prices as published. Should increases be forced on us by airlines, exchange rates, etc., we reserve the right to surcharge.

ESCORT: Group will be accompanied by Ted Schiffman with a minimum of 10 travelers on both the main and extension program.

Schedules, accommodations and prices are accurate at the time of writing. They are subject to change.



TRIP INFORMATION: Upon receipt of your application, instructions will be sent to you concerning all aspects of your trip, such as itinerary, photographic equipment, documents, clothing, insurance, etc.

INVOICING: Final invoicing of your trip will be done approximately four months prior to departure. Final payment is due 75 days prior to departure. (May 20, 2012)

FINAL DOCUMENTS: Final documents and tickets will be sent to you approximately two weeks prior to departure. We regret to advise that no documents can be released if final payments are not received.

PAYMENT SCHEDULE: A deposit of \$750 per person plus \$250 for the extension must be submitted with each application, as well as your insurance payment if you wish to take advantage of the pre-existing medical condition exclusion. Deposits may be paid by check or charged to American Express, MasterCard, Visa or Discover. Final payment is payable by check or money order ONLY and is due no later than 75 days prior to departure. (May 20, 2012)

CANCELLATIONS: Cancellations are only effective on receipt of written notification. The following per person fees are applicable on this safari:

- Up to 75 days prior to departure, less \$250 handling fee.
- 74-60 days prior to departure, less \$750 of tour cost.
- 59-45 days prior to departure, less 50% of tour cost.
- Less than 45 days prior to departure, refund is dependent on amount recoverable from overseas suppliers.

These cancellation fees are also in addition to any imposed by airlines. **WE STRONGLY RECOMMEND THAT YOU OBTAIN THE OPTIONAL INSURANCE POLICY. INFORMATION WILL BE SENT TO YOU UPON RECEIPT OF RESERVATION FORM. INSURANCE PREMIUMS ARE NOT REFUNDABLE.**

DEVIATIONS: Should additional reservations be required, including extensions in Europe or in Africa, we will happy to make all the arrangements. However, there will be an extra charge of \$150 per person for such deviations, over and above the cost of the services required.

CHANGE FEES: Once you reserve your tour, changes are possible subject to availability of air or land space at the time of request. Should there be any change fees imposed by airlines or ground operators, or additional costs incurred due to availability of any space, this cost will be invoiced to you.

LATE BOOKING FEE: Classic Escapes reserves the right to impose a late booking fee to offset additional administrative costs for any reservations received 60 days (or closer) to the program's departure date. This fee is \$250 per person, over and above any costs incurred by airlines and suppliers

NOT INCLUDED: Cost of passport and visa fees, and service charges for obtaining visa fees; excess baggage charges levied by airlines; meals other than specified; beverages and meals not specified in itinerary; gratuities to driver/guides and other conveyance attendants; laundry and other items of a personal nature; gratuities not imposed by hotels and/or restaurants for included services; optional personal, baggage and tour cancellation insurance policy; U.S. and foreign airport taxes; cost for anything not specifically included in listing above.

WILD ANIMALS: Please be aware that this safari may take you into close contact with wild animals. Attacks by wild animals are rare, but no safari into the African wilderness can guarantee that this will not occur. Neither the company, nor their employees, nor agents can be held responsible for any injury or incident on the safari. Please note that not all camps are fenced.

PASSPORT & VISAS: The onus is upon the guest to ensure that passports and visas are valid for the countries visited. The company, their staff and their agents cannot be held liable for any visas, etc. not held by the guests, nor the cost of visas. Visa information will be forwarded upon receipt of reservation.

RESPONSIBILITY: Neither Classic Escapes (the Company) nor any person or agent acting for, through or on behalf of the Company shall be liable for any loss or damage whatsoever arising from any cause whatsoever, and without restricting the generality of the foregoing, shall particularly not be responsible for loss or damage arising from any errors or omissions contained in its brochure or other literature, loss or damage caused by delays, sickness, theft, injury or death. In addition the Company shall have the right at any time at its discretion to cancel any tour or the remainder thereof or make any alteration in route, accommodation, price or other details and, in the event of any tour being rendered impossible, illegal or inadvisable by weather, strike, war, government or interference or any other cause whatsoever, the extra expenses incurred as a result thereof shall be the responsibility of the passenger. The Company may at its discretion and without liability or cost to itself at any time cancel or terminate the guest's booking and in particular, without limiting the generality of the foregoing, it shall be entitled to do so in the event of the illness or the illegal or incompatible behavior of the guest, who shall in such circumstances not be entitled to any refund. The person making any booking will, by the making of such booking, warrant that he or she has authority to enter into a contract on behalf of the other person included in such a booking and in the event of the failure of any or all of the other persons so included to make payment, the person making the booking shall by his/her signature thereof assume personal liability for the total price of all bookings made by him/her.

PHOTOGRAPHY: The Company reserves the right without further notice to make use of any photograph or film taken on the safari by our photographers without payment or permission. We guarantee that no photographs of a compromising nature will be used.

CHANGES TO SCHEDULES: Although every effort is made to adhere to schedules it should be borne in mind that the Company reserves the right and in fact is obliged to occasionally change routes and camps on safaris as dictated by changing conditions. Such conditions may be

Schedules, accommodations and prices are accurate at the time of writing. They are subject to change.



brought about by seasonal rainfall on bush tracks, airfields and in wildlife areas, by wildlife migrations from one region to another, or airline or other booking problems, etc.

REFUNDS: While the company uses its best endeavors to ensure that all anticipated accommodation is available as planned, there shall be no claim of any nature whatsoever against the Company for a refund either in the whole or part, if any accommodation or excursion is unavailable and a reasonable alternative is not found. If the guest is unable to use any service provided in the itinerary, then there are no refunds due.

AIRLINE CLAUSE: The airlines concerned are not to be held liable for any act, omission or event during the time the passengers are not on board their planes or conveyance. The passengers' tickets in use by the airline or by other carriers concerned when issued shall constitute the sole contract between the airlines and the purchaser of these tickets and/or passengers.

DELAYS: We cannot be held liable for any delays or additional costs incurred as a result of airlines not running to schedule. If one of our guides is unable to take a safari due to illness, etc. we reserve the right to substitute with another guide.

This agreement is made subject to and shall be governed by and construed according to the laws of the country in which the safari takes place. Classic Escapes act merely as an agent for the operating companies.

To the best of our knowledge the itinerary is correct at the time of printing. We cannot be held responsible for any inaccuracies or changes that may occur after printing.

CONSENT: The payment of the deposit OR any other partial payment for a reservation on a safari constitutes consent by all guests covered by that payment to all provisions of the conditions and general information contained in this brochure whether the guest has signed the booking form or not. The terms, under which you agree to take this safari, cannot be changed or amended except in writing signed by an authorized director of the Company.

INSURANCE: It is a condition of booking that the sole responsibility lies with the guest to ensure that they carry the correct comprehensive travel and medical insurance to cover themselves, as well as any dependants/traveling companions for the duration of their trip. This insurance should include cover in respect of, but not limited to, the following eventualities: cancellation or curtailment of the program, emergency evacuation expenses, medical expenses, repatriation expenses, damage/theft/loss of personal baggage, money and goods. Classic Escapes, including their representatives, employees and agents will take no responsibility for any costs, losses incurred or suffered by the guest, or guest's dependants or traveling companions, with regards to, but not limited to, any of the above mentioned eventualities. Guests will be charged directly by the relevant service providers for any emergency services they may require, and may find themselves in a position unable to access such services should they not be carrying the relevant insurance cover. **PLEASE NOTE INSURANCE PREMIUMS ARE NON-REFUNDABLE SHOULD TOUR BE CANCELED BY PARTICIPANT.**

INSURANCE PACKAGE: Classic Escapes offers a comprehensive insurance package, which allows the Pre-Existing Condition Exclusion to be waived if purchased within 7 days of the initial trip payment. Details can be found on our website at <http://www.classicescapes.com/insurance.html>. or call our office for more details (800-627-1244). If obtaining this pre-existing condition waiver is not of importance to you, you may opt to wait until you receive your pre-departure packet of information which will include details on the insurance package.

INSURANCE PREMIUM: See premium schedule below, or call us for the exact amount and information on the policy. This is applicable to all coverage contained in the policy. You must be medically able to travel when you pay your premium. In the event that a claim is filed, the injury or illness must be substantiated to the Claims Department.

The cost of your insurance premium is based on the TOTAL cost of your trip including: the main itinerary, airfare, airline taxes, single supplements, optional excursions and optional extensions. The premium for your tour will be calculated as follows:

TOTAL TOUR COST	PREMIUM PER PERSON
\$5,501 - \$6,000	\$449
\$6,001 - \$6,500	\$488
\$6,501 - \$7,000	\$522
\$7,001 - \$8,000	\$585
\$8,001 - \$9,000	\$662
\$9,001 - \$10,000	\$ 738
\$10,001 - \$ 11,000	\$ 813
\$11,001 - \$ 12,000	\$ 893
\$12,001 - \$ 13,000	\$ 970

Please contact Classic Escapes if you have any questions or need assistance calculating your premium.

PLEASE NOTE INSURANCE PREMIUMS ARE NON-REFUNDABLE SHOULD TOUR BE CANCELED BY PARTICIPANT.

Reservation Form:

TED SCHIFFMAN-KENYA

12AFG0803/SCHIFFMAN

Enclosed is my deposit for \$ _____ (\$750 per person, plus \$250 for the extension) to hold _____ place(s) on the Classic Safari to Kenya departing on August 3, 2012. Cost is \$5,795 per person, double occupancy, land only. Additional international air from Washington D.C is \$1,600, plus \$575 departure taxes. (As of October 5, 2011 - subject to change)

Final payment due date is: May 20, 2012

Please make check payable to CLASSIC ESCAPES and mail to 58-25 Queens Blvd., Woodside, NY 11377

OR

Charge deposit to: MasterCard Visa American Express Discover

(Credit Card Authorization form needs to be completed and returned to Classic Escapes via mail or fax to 718-204-4726)

Deposits can be made by credit card; however, all final payments are required to be made by check or money order only.

1) NAME (As appears on passport): Mr. Mrs. Ms. _____

2) NAME (As appears on passport): Mr. Mrs. Ms. _____

NAME FOR NAME BADGE IF DIFFERENT FROM ABOVE: 1) _____ 2) _____

STREET ADDRESS: _____

CITY: _____ STATE: _____ ZIP: _____

PHONES: HOME: () _____ OFFICE: () _____ MOBILE: () _____

E-MAIL ADDRESS: _____ FAX: () _____

- I certify that I have not recently been treated for, nor am I aware of any physical or other condition or liability that would create a hazard to myself or the other members of this tour.
- The two of us above are sharing a room and, where possible, would like a room with: ONE TWO Beds (Make one selection only)
- I am sharing with _____ (form sent separately)
- I need assistance in securing a roommate. I understand if TED SCHIFFMAN or the tour operator cannot locate one for me by final payment date, I agree to pay the additional single supplement. I prefer to share with: Smoker Non-smoker
- I desire single accommodations, if available, and will pay the single supplement additional cost of:
 \$1,195 for the main program \$795 for the post extension
- I/We wish to participate in the optional extension(s) at an additional per person cost of:
 \$2,795 for Lake Nakuru & Samburu Reserve post-extension
 Optional flight Nairobi/Tsavo (\$300 per person)
 Optional flight Samburu/Nairobi (\$300 per person)
 Optional Balloon Safari \$450 additional per adult \$275 additional per child
 Optional Lake Victoria Excursion \$496 additional, per adult \$305 additional, per child

- Please make my/our round trip air reservations on the group flights from Washington D.C via Ethiopian Airlines.
- Please make domestic round-trip air reservations for me from my home city: _____ to connect with the group flights and let me know the additional cost.

Please send me information on air upgrades for: Business/First Class (only one class - business/first - exists)

Airline Seating Preference Aisle Window Frequent Flier # _____

***We can request a seating preference on your behalf, however this is only a request and NOT guaranteed, as some seating assignments may be airport check-in only. Requests should be made in writing no later than 60 days prior to departure. Bulkhead and/or emergency row seats can only be requested at airport check-in on the day of departure. Also note that even if we do obtain your preferred seat, it is not guaranteed that the seat will be provided during check-in as there might be equipment changes that nullify our selection.*

- I/We will make own air arrangements and will provide you with an itinerary before trip departure.

All rates quoted are based on tariffs and value of foreign currencies in relation to the U.S. dollar in effect as of October 5, 2011, and are subject to change. Refund of deposit is made if cancellation is received in writing up to 75 days prior to departure, less \$250 per person handling fee. Thereafter, refund is made less any cancellation charges levied in accordance with the policy outlined in the accompanying Conditions of Travel. **WE STRONGLY RECOMMEND THAT YOU OBTAIN TRAVEL INSURANCE. RESERVATIONS ARE ACCEPTED SUBJECT TO TOUR CONDITIONS AND WILL BE CONFIRMED ONLY IF ACCOMPANIED BY COMPLETED FORM SIGNED BY THE TOUR PARTICIPANT(S).**

SIGNATURE: _____ DATE: _____

SIGNATURE: _____ DATE: _____

CLASSIC ESCAPES INC.
58-25 Queens Blvd.,
Woodside, NY 11377

(We recommend that you keep a copy of your selections as noted above for your future reference)



58-25 Queens Blvd., Woodside, NY 11377
T: (718) 204-7077; (800) 627-1244
F: (718) 204-4726
E: info@classicescapes.com

CREDIT CARD PAYMENT AUTHORIZATION

Please Note: If you wish to charge your deposit to Visa, MasterCard, American Express or Discover, this authorization form MUST be completed and returned to us along with your reservation form before we can process your application.

I authorize (Classic Escapes Inc.) to charge my VISA/MASTERCARD/DISCOVER/AMEX listed below:

Name appearing on credit card _____

Card number _____ Expiration date _____

Card Verification Number* _____ Card Type _____

Billing address of credit card _____

Amount of transaction _____

Services rendered/Items purchased _____

Phone number _____

Signature _____ Date _____

***How To Locate Your Card Verification Number:**

(Visa, MasterCard, Discover: Locate the credit card number on the back of the card above the signature box. Enter the 3 digit number which follows the credit card number. **American Express:** Enter the 4 digit number found directly above and to the right of the credit card number.)

I understand that all rates quoted on this tour I'm making a payment on are based on tariffs and value of foreign currencies in relation to the U.S. dollar in effect as of October 5, 2011, and are subject to change. Refund of deposit is made if cancellation is received in writing up to 75 days prior to departure, less \$250 per person handling fee. Thereafter, refund is made less any cancellation charges levied, based on the following schedule:

- Up to 75 days prior to departure, less \$250 handling fee.
- 74-60 days prior to departure, deposit is forfeited.
- 59-45 days prior to departure, less 50% of tour cost.
- Less than 45 days prior to departure, refund is dependent on amount recoverable from overseas suppliers.
- These cancellation fees are also in addition to any imposed by airlines.

PLEASE NOTE: At times, our bank requires photocopy of credit card (both sides) and driver's license or document showing signature of cardholder, in order to process the charge. While it is not required at this time that you include these materials with your deposit, if our bank requests it, we will contact you for these copies.